

WOODLAND WALK NOVEMBER



Wayfaring Tree



Guelder Rose



Spindle



Hazel Catkins

Here are six fruits and catkins to look out for on your walk round Quaker Wood. Tick the ones you find. (*Hint: Look at the poster and plan by the gate.*)

If you have a camera, you could take a few photographs and email your best to: quakerwooddiss@gmail.com for consideration for inclusion on the website.



Sloes



Rose Hips

www.quakerwood.org.uk

Quaker Wood ACTIVITIES - NOVEMBER

Cut out the book mark and fold it in half.

1

2

Match the pictures underneath to the labels.

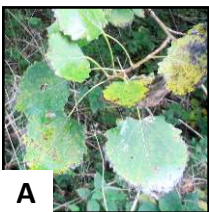
3

1. Small-leaved Lime
2. Aspen
3. Field Maple
4. Wild Service Tree
5. Sycamore
6. Elder
7. Hawthorn
8. Silver Birch
9. English Oak
10. Black Poplar
11. Ash
12. Hornbeam

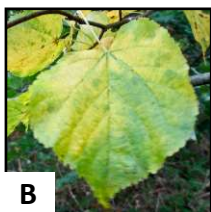
B

L
E
A
V
E
S

Hint: if you are not sure, use the names to search for pictures online.



A



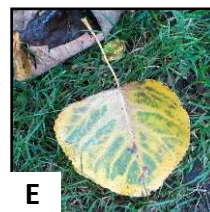
B



C



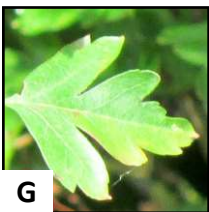
D



E



F



G



H



I



J



K



L

4

On your next walk in Quaker Wood, look at the fallen leaves. See how many different ones you can find and identify.